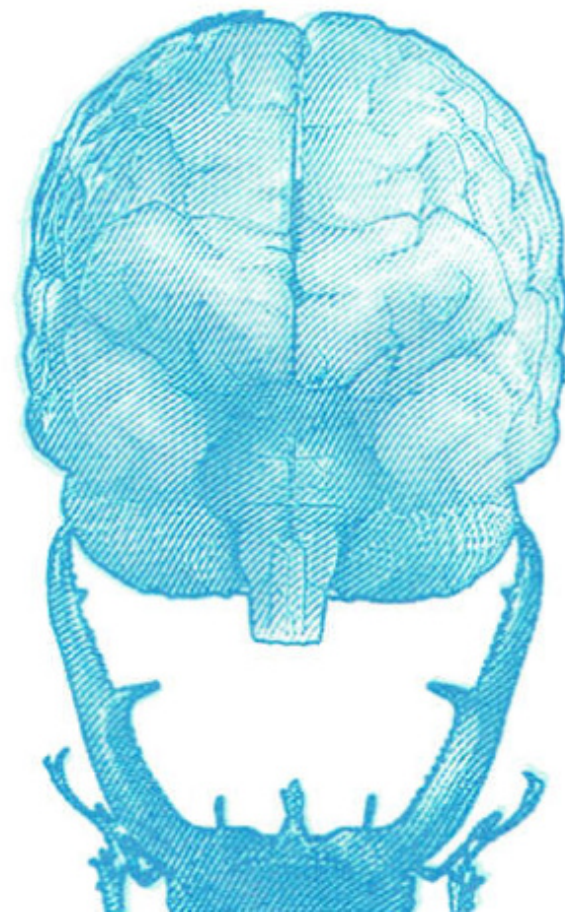
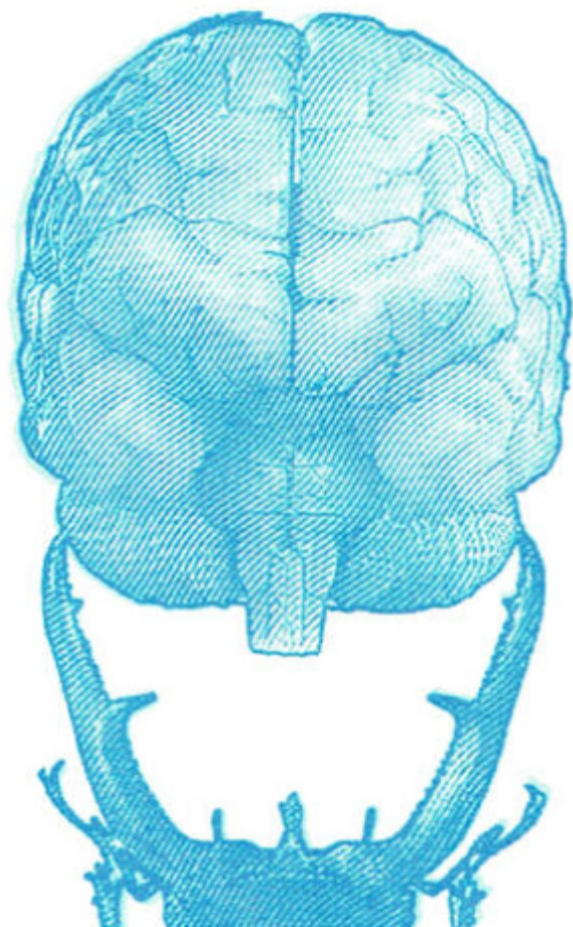


# BeetleBrain Bowler

de Keith S. Chambers { Amalgamated Confusion  
carimbo de borracha » 127 x 177 mm  
estampa 3 de uma série de 5  
21/34  
2018





1351 W. Cerritos Ave., 4  
Anaheim CA 92802-2263  
USA



Rúben Gomes  
R. do Falcão, 369 3.Esq.  
4300-181 Campanhã, Porto  
Portugal



BeetleBrainBowler  
Plate 3 in a series of 5

